

# CAMPUS INFORMATION

## FACTS AT A GLANCE

---

	<b>FALL 2005</b>	<b>FALL 2004</b>
Student Enrollment	8,473	8,542
FTES	2,973	3,172
Annual FTES	(period 2 projection) 6,463	6,793
Credit WSCH	not available	90,061
Non-Credit WSCH	not available	749

### Student Demographics

#### **Gender**

Men	37%	37%
Women	63%	63%

#### **Age**

under 20	28%	23%
20-24	32%	34%
25-34	22%	23%
over 34	18%	21%
<i>Average student age</i>	26	27

#### **Status**

Full-time students	27%	26%
Part-time students	73%	74%

### Campus

College was founded on September 12, 1949

Campus size is approximately 90 acres

Web address: <http://www.lahc.edu>

Labs	30	30
Student Computers	660	660

### Programs and Major

Leading majors are in Liberal Arts (366 degrees awarded), Health Sciences (63 degrees awarded), and Family and Consumer Sciences (29 degrees awarded)

Student Right-to-Know Transfer Rate	(2002) 21.0%	(2001) 20.9%
Student Right-to-Know Completion Rate	(2002) 32.3%	(2001) 30.8%
AA/AS Majors offered	32	32
Certificates offered	37	37

Intercollegiate Sports include baseball, basketball, football, soccer, and volleyball.

Mascot: Seahawk

Colors: Blue and Gold

### Faculty and Staff Full-Time Equivalent

Administrators	12.1	11.1
Faculty ( <i>includes faculty overload</i> )		
Regular	83.8	119.8
Hourly	78.3	87.5
Classified Administrator	1.0	2.0
Classified Professional	11.2	10.0
Classified Support	119.2	121.2
<i>Total Employee FTE</i>	305.6	351.6

### Year End Budget (*Unrestricted General Fund*)

(05/06) **\$25,330,369**

(04/05) **\$22,957,089**



## Accreditation

Los Angeles Harbor College (Harbor College) is a public two-year college providing educational services under the Los Angeles Community College District Board of Trustees. Harbor College is accredited by the Accrediting Commission for Community and Junior Colleges of the Western Association of Schools and Colleges and is approved under the regulations of the California Community Colleges. Los Angeles Harbor College was founded in 1949 and is one of the 110 colleges in the California Community College system.

## A Brief History

In 1941 the Education Committee of the Wilmington Chamber of Commerce petitioned the Los Angeles City Board of Education to establish trade extension classes at Banning High School to meet critical, war-inspired training needs.

Realizing that such trade extension classes would not be a long-range answer to the educational needs of the area, the Educational Committee (expanded in 1945 to include representatives from San Pedro and Lomita) called a meeting of representatives of key industries located in the Harbor Area to discuss the need for either a trade or technical school.

After surveys of projected population, property valuation, and employment possibilities, these community leaders indicated a need for such a post-high school institution, and the Education Committee then petitioned the Los Angeles City Board of Education to provide such a school in the area.



Los Angeles Harbor College officially opened in September 1949. The College has grown from an enrollment of 400 students to a current enrollment of approximately 8,500 students. While still maintaining a technical program, the academic and general education offerings have increased to meet the changing needs of the community.

## Mission Statement

The mission of Los Angeles Harbor College is to offer an environment that fosters learning by providing comprehensive programs that meet the educational needs of students and are appropriate and useful to the community we serve, including:

- Degree and transfer programs
- Vocational and workforce preparation
- Basic skills instruction
- English as a second language
- Credit and non-credit courses for life-long learning
- Contract education including customized corporate training
- Community services
- Support services
- Information literacy

An essential aspect of the mission for the community we serve is to advance economic growth and global competitiveness through education, training, and services that contribute to continuous workforce improvement and civic responsibility.

We are committed to student learning in a supportive educational environment that recognizes the uniqueness of individuals, provides a center for the cultural enrichment of the community, and seeks dynamic dialog and reflective evaluation and improvement of the institution.

# CAMPUS INFORMATION

## PROFILE

### Students

Harbor College enrolled 8,473 students in the Fall 2005 semester. Residents of California are charged only \$26 per unit to attend one of the State's public community colleges. The tuition for non-residents in 2004-2005 was \$154 per unit. Anyone 18 years of age or older is eligible for admissions. Persons younger than 18 may enroll with special permission. A majority of our students are employed either part-time or full-time.

### Academic Divisions and Departments

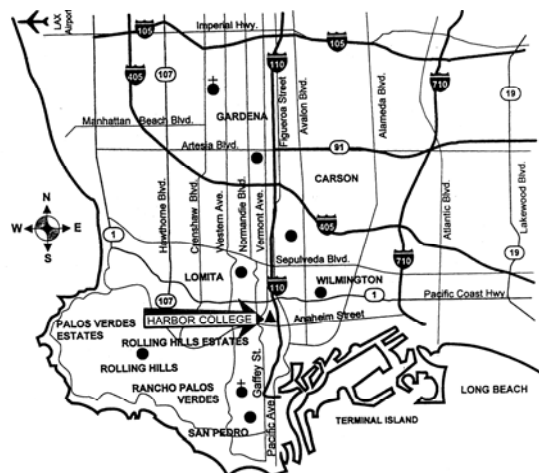
Los Angeles Harbor College has nine academic divisions: Behavioral Sciences, Business, Communications, Health Sciences, Humanities and Fine Arts, Mathematics and Physical Sciences and Technology, Physical Education, Science—Family and Consumer Studies, and Social Science.

### Location and Directions

The campus is located at 1111 Figueroa Place, Wilmington, California 90744-2397, approximately 22 miles south of the city of Los Angeles.

The primary service area includes the 15th District of Los Angeles (Harbor City, Harbor Gateway, San Pedro, and Wilmington), the cities of Carson, Gardena, Lomita, Palos Verdes Estates, Rancho Palos Verdes, Rolling Hills Estates, Rolling Hills, and some parts of Long Beach and Redondo Beach.

The campus is surrounded by a county park and golf course and is located on some 90 acres in the heart of the Los Angeles Harbor area. It is close to recreational and cultural facilities such as beaches, mountains, museums, parks, downtown Los Angeles, and Hollywood.



#### How To Reach Harbor

##### *From the Metropolitan Los Angeles Area:*

South on 110 Freeway to Anaheim Street. Exit and turn north to the campus.

##### *From San Pedro:*

North on 110 Freeway to Pacific Coast Highway. Exit and turn south on Figueroa Street, then west on "L" Street to the campus.

##### *From Long Beach:*

West on Pacific Coast Highway. Turn south on Figueroa Street, then west on "L" Street to the campus.

##### *From LAX:*

Go east on surface streets to the 405 Freeway. Go south on the 405 Freeway to the 110 Freeway going south. Exit at Anaheim Street and turn north to the campus.

# LOS ANGELES COMMUNITY COLLEGE DISTRICT

## FACTS AT A GLANCE, FALL 2005

The Los Angeles Community College District (LACCD) is the largest community college district in the United States and is one of the largest in the world. The LACCD consists of nine colleges and covers an area of more than 882 square miles.

- Los Angeles City College
- East Los Angeles College
- **Los Angeles Harbor College**
- Los Angeles Mission College
- Pierce College
- Los Angeles Southwest College
- Los Angeles Trade-Technical College
- Los Angeles Valley College
- West Los Angeles College



ENROLLMENT FIGURES			
City	16,306	Pierce	17,575
East	20,813	Southwest	5,935
Harbor	8,473	Trade-Tech	12,757
Mission	7,525	Valley	16,111
West	8,390	Instructional TV	816
			<b>TOTAL: 114,701</b>

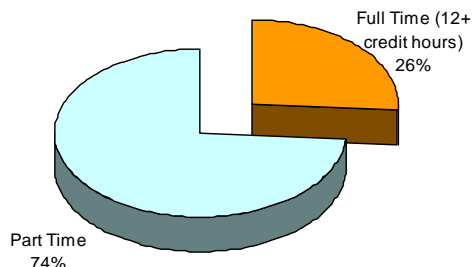
Source: Los Angeles Community College Website ([http://www.laccd.edu/about\\_us/fast\\_facts.htm](http://www.laccd.edu/about_us/fast_facts.htm)).

# LOS ANGELES COMMUNITY COLLEGE DISTRICT

## FACTS AT A GLANCE, FALL 2005

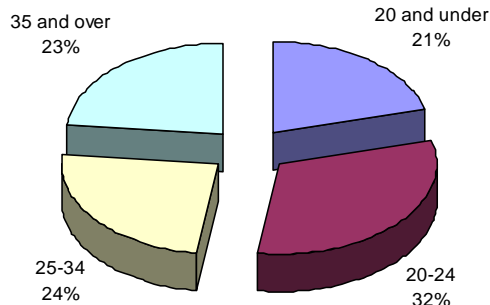
### STUDENT COURSE LOAD

Student Course Load, Fall 2005



### AGE OF STUDENT POPULATION

Age of Student Population, Fall 2005



### STUDENT EDUCATIONAL GOALS

Vocational	35.5%
Transfer	30.8%
General Education	10.2%
Transitional	6.9%
Unknown/Undecided	16.6%

### STUDENT PROFILE

80%	Minority
40%	Non-Native English speaking
40%	Below the poverty line
25%	From homes in which parents received only elementary education

### AVERAGE TUITION (based on two semesters)

Los Angeles Community Colleges	\$780*
California State University	\$3,122
University of California	\$6,504

\*Only \$26 per credit unit.

Source: Los Angeles Community College Website ([http://www.laccd.edu/about\\_us/fast\\_facts.htm](http://www.laccd.edu/about_us/fast_facts.htm)).