

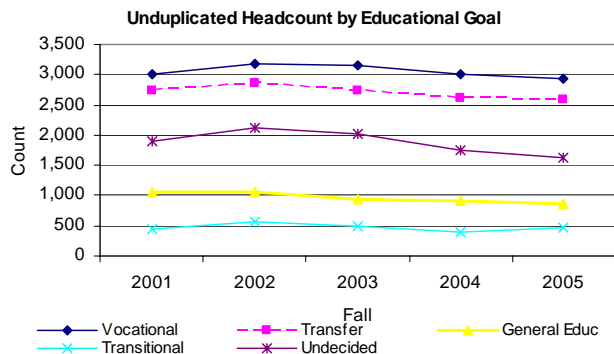
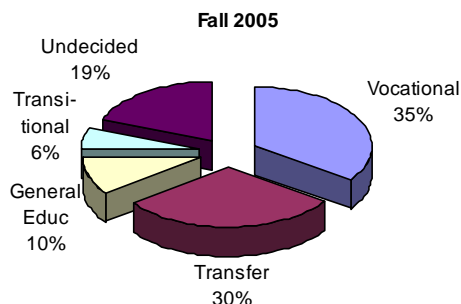
AGE	Fall									
	1996	1997	1998	1999	2000	2001	2002	2003	2004	2005
Under 20	1,465 19.5%	1,473 18.7%	1,500 20.0%	1,540 20.6%	1,449 20.3%	2,117 23.9%	2,307 24.4%	2,053 22.6%	1,926 22.5%	2,387 28.2%
20-24	2,382 31.8%	2,411 30.5%	2,344 31.3%	2,326 31.2%	2,297 32.1%	2,639 29.8%	2,958 31.2%	2,994 32.9%	2,877 33.7%	2,698 31.8%
25-34	1,958 26.1%	2,102 26.6%	1,793 23.9%	1,774 23.8%	1,742 24.4%	2,019 22.8%	2,119 22.4%	2,134 23.5%	1,988 23.3%	1,826 21.6%
35 and over	1,696 22.6%	1,910 24.2%	1,858 24.8%	1,827 24.5%	1,663 23.3%	2,081 23.5%	2,084 22.0%	1,920 21.1%	1,751 20.5%	1,562 18.4%
<b>Total</b>	<b>7,500</b> 100.0%	<b>7,895</b> 100.0%	<b>7,494</b> 100.0%	<b>7,466</b> 100.0%	<b>7,151</b> 100.0%	<b>8,855</b> 100.0%	<b>9,469</b> 100.0%	<b>9,102</b> 100.0%	<b>8,542</b> 100.0%	<b>8,473</b> 100.0%

NOTE: Credit students only. Figures are based on the percentages applied to First Census college enrollments.

Source: Los Angeles Community College District Office of Institutional Research and Information, *Information Digest* Report (<http://research.laccd.edu/research/>), Census Data Warehouse (CEN\_Rdb), and Student Information System (SIS).

# STUDENT DEMOGRAPHICS

## EDUCATIONAL GOAL



EDUCATIONAL GOAL	Fall									
	1996	1997	1998	1999	2000	2001	2002	2003	2004	2005
Prepare for New Career	1,280	1,384	1,220	1,200	1,183	1,400	1,509	1,502	1,398	1,402
Advance in Job/Career	496	501	479	444	439	533	508	511	463	406
Discover Career Goals	623	633	607	604	548	665	689	640	622	615
Maintain License	233	217	200	200	204	229	258	286	343	320
Voc. Degree w/o Transfer	121	121	130	115	111	130	141	138	114	111
Vocational Cert w/o Tran	66	66	59	54	47	62	78	73	61	71
<b>Vocational Subtotal</b>	<b>2,820</b>	<b>2,922</b>	<b>2,696</b>	<b>2,617</b>	<b>2,531</b>	<b>3,019</b>	<b>3,184</b>	<b>3,150</b>	<b>3,001</b>	<b>2,925</b>
	34%	34.4%	34.1%	33.7%	34.0%	33.0%	32.5%	33.6%	34.4%	34.5%
Transfer with Degree	1,795	1,915	1,859	1,833	1,799	2,123	2,219	2,132	2,084	2,124
Transfer without Degree	499	502	449	456	481	614	653	615	535	453
<b>Transfer Subtotal</b>	<b>2,293</b>	<b>2,418</b>	<b>2,308</b>	<b>2,289</b>	<b>2,280</b>	<b>2,737</b>	<b>2,871</b>	<b>2,747</b>	<b>2,619</b>	<b>2,577</b>
	27.6%	28.5%	29.2%	29.5%	30.6%	29.9%	29.3%	29.3%	30.1%	30.4%
Assoc Degree w/o Tran	377	454	430	423	422	483	541	523	522	534
Personal Enrichment	417	508	494	530	418	569	513	424	392	334
<b>General Educ Subtotal</b>	<b>794</b>	<b>962</b>	<b>924</b>	<b>953</b>	<b>841</b>	<b>1,052</b>	<b>1,053</b>	<b>947</b>	<b>914</b>	<b>868</b>
	9.6%	11.3%	11.7%	12.3%	11.3%	11.5%	10.7%	10.1%	10.5%	10.2%
Improve Basic Skills	126	126	139	138	114	137	161	140	106	115
Complete HS Diploma	235	216	225	174	171	313	413	363	300	358
<b>Transitional Subtotal</b>	<b>360</b>	<b>342</b>	<b>364</b>	<b>312</b>	<b>285</b>	<b>449</b>	<b>574</b>	<b>503</b>	<b>406</b>	<b>473</b>
	4.3%	4.0%	4.6%	4.0%	3.8%	4.9%	5.9%	5.4%	4.7%	5.6%
Undecided	1,232	1,287	1,202	1,279	1,214	1,598	1,787	1,755	1,601	1,517
Unknown	809	554	418	311	295	303	339	276	174	113
<b>Undecided Subtotal</b>	<b>2,041</b>	<b>1,841</b>	<b>1,620</b>	<b>1,590</b>	<b>1,509</b>	<b>1,901</b>	<b>2,126</b>	<b>2,031</b>	<b>1,775</b>	<b>1,630</b>
	24.6%	21.7%	20.5%	20.5%	20.3%	20.8%	21.7%	21.7%	20.4%	19.2%
<b>Total</b>	<b>8,309</b>	<b>8,485</b>	<b>7,912</b>	<b>7,761</b>	<b>7,446</b>	<b>9,158</b>	<b>9,808</b>	<b>9,378</b>	<b>8,715</b>	<b>8,473</b>
	100.0%	100.0%	100.0%	100.0%	100.0%	100.0%	100.0%	100.0%	100.0%	100.0%

The Major Goal Categories tallied above are inclusive of the following responses to the goal question on the Application for Admission:

**Vocational** includes: Preparing New Career (Old Category = Job Skills); Advance in Job/Career; Discover Career Goals; Maintain License, Vocational Degree without Transfer; and Vocational Certificate without Transfer.

**Transfer** includes: Transfer with Degree and Transfer without Degree.

**General Education** includes: Associate Degree without Transfer and Personal Enrichment.

**Transitional** includes: Improve Basic Skills and Complete High School Diploma.

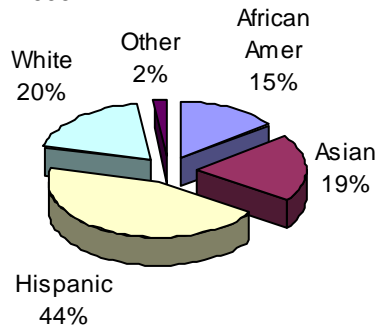
**NOTE:** Credit students only. Figures are based on the percentages applied to First Census college enrollments.

Source: Los Angeles Community College District Office of Institutional Research and Information, *Information Digest* Report (<http://research.laccd.edu/research/>), Census Data Warehouse (CEN\_Rdb), and Student Information System (SIS).

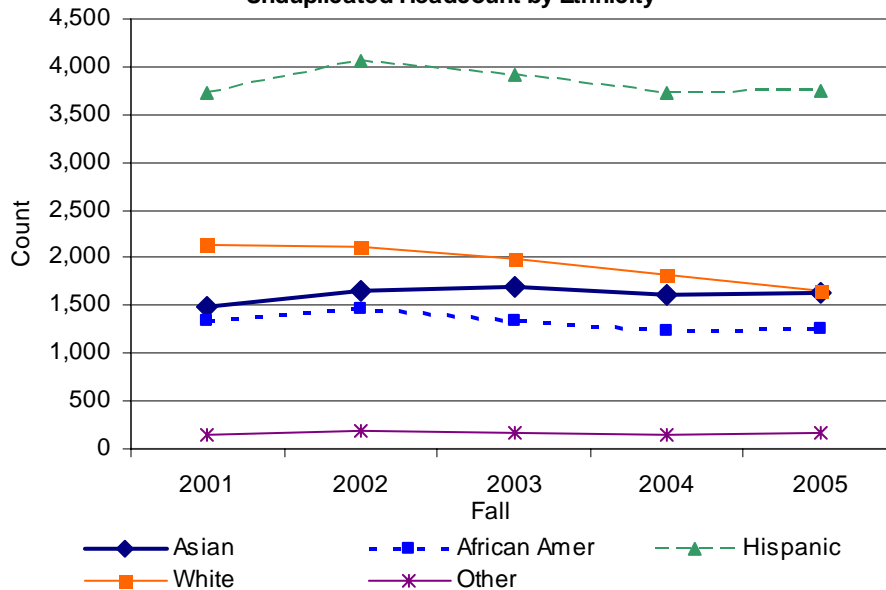
# STUDENT DEMOGRAPHICS

## ETHNICITY

Fall 2005



Unduplicated Headcount by Ethnicity



ETHNICITY	Fall									
	1996	1997	1998	1999	2000	2001	2002	2003	2004	2005
African Amer	1,123 15.0%	1,223 15.4%	1,180 15.7%	1,080 14.5%	1,005 14.1%	1,348 15.2%	1,458 15.4%	1,347 14.8%	1,225 14.3%	1,266 14.9%
Asian	1,307 17.4%	1,349 17.0%	1,167 15.6%	1,176 15.8%	1,181 16.5%	1,484 16.8%	1,650 17.4%	1,695 18.6%	1,610 18.8%	1,641 19.4%
Hispanic	2,902 38.7%	3,125 39.4%	3,107 41.5%	3,190 42.8%	3,036 42.5%	3,727 42.1%	4,054 42.8%	3,907 42.0%	3,732 42.0%	3,743 42.0%
White	2,060 27.5%	2,094 26.4%	1,910 25.5%	1,872 25.1%	1,785 25.0%	2,143 24.2%	2,120 22.4%	1,994 21.9%	1,830 21.4%	1,663 19.6%
Other	108 1.4%	140 1.8%	130 1.7%	132 1.8%	145 2.0%	152 1.7%	187 2.0%	159 1.7%	145 1.7%	160 1.9%
<b>Total</b>	<b>7,500</b> 100.0%	<b>7,931</b> 100.0%	<b>7,494</b> 100.0%	<b>7,450</b> 100.0%	<b>7,151</b> 100.0%	<b>8,855</b> 100.0%	<b>9,469</b> 100.0%	<b>9,102</b> 100.0%	<b>8,542</b> 100.0%	<b>8,473</b> 100.0%

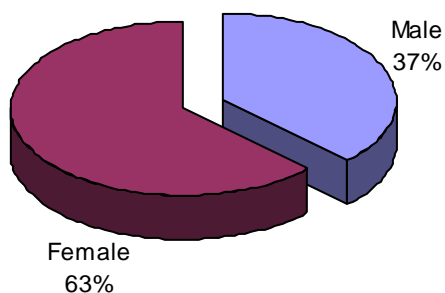
NOTE: Credit students only. Figures are based on the percentages applied to First Census college enrollments.

Source: Los Angeles Community College District Office of Institutional Research and Information, *Information Digest* Report (<http://research.laccd.edu/research/>), Census Data Warehouse (CEN\_Rdb), and Student Information System (SIS).

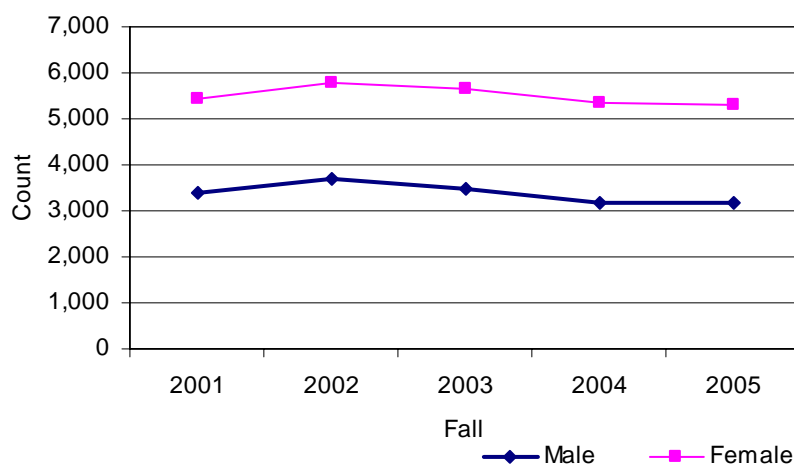
# STUDENT DEMOGRAPHICS

## GENDER

Fall 2005



Unduplicated Headcount by Gender



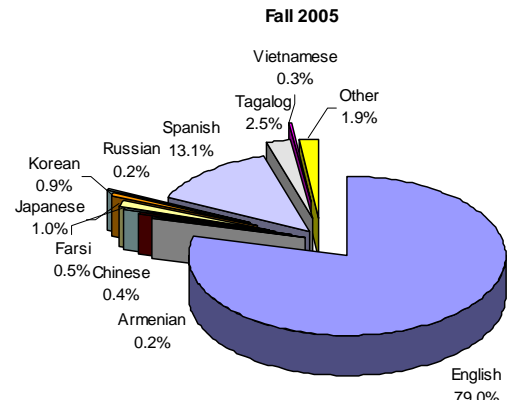
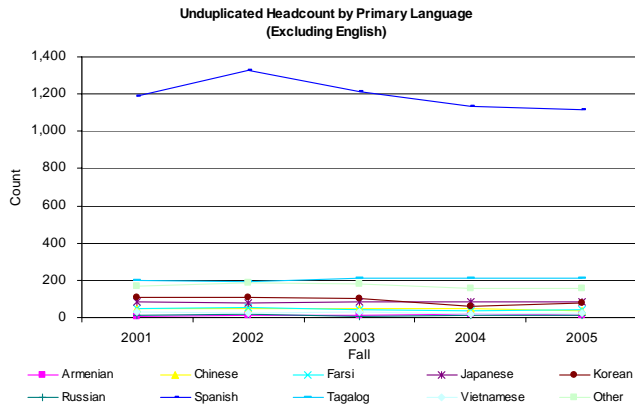
GENDER	Fall									
	1996	1997	1998	1999	2000	2001	2002	2003	2004	2005
Male	2,955 39.4%	3,082 38.9%	2,870 38.3%	2,886 38.7%	2,804 39.2%	3,412 38.5%	3,675 38.8%	3,463 38.0%	3,181 37.2%	3,161 37.3%
Female	4,545 60.6%	4,849 61.1%	4,624 61.7%	4,564 61.3%	4,347 60.8%	5,443 61.5%	5,794 61.2%	5,639 62.0%	5,361 62.8%	5,312 62.7%
<b>Total</b>	<b>7,500</b> 100.0%	<b>7,931</b> 100.0%	<b>7,494</b> 100.0%	<b>7,450</b> 100.0%	<b>7,151</b> 100.0%	<b>8,855</b> 100.0%	<b>9,469</b> 100.0%	<b>9,102</b> 100.0%	<b>8,542</b> 100.0%	<b>8,473</b> 100.0%

NOTE: Credit students only. Figures are based on the percentages applied to First Census college enrollments.

Source: Los Angeles Community College District Office of Institutional Research and Information, *Information Digest* Report (<http://research.laccd.edu/research/>), Census Data Warehouse (CEN\_Rdb), and Student Information System (SIS).

# STUDENT DEMOGRAPHICS

## PRIMARY LANGUAGE



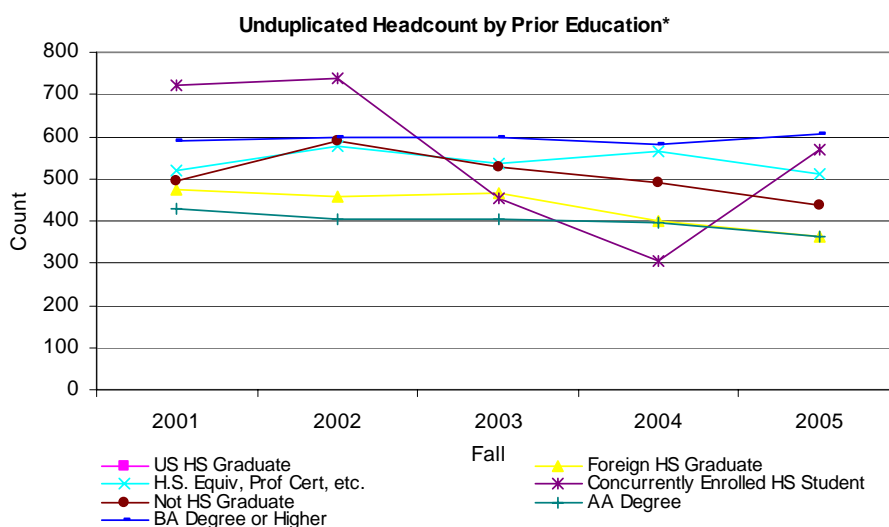
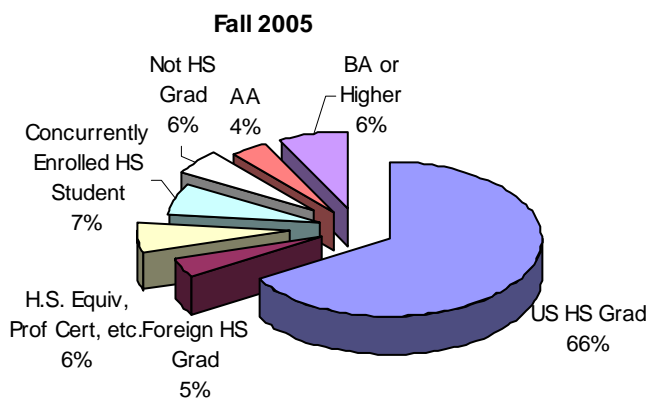
HOME LANGUAGE	Fall									
	1996	1997	1998	1999	2000	2001	2002	2003	2004	2005
English	5,813 77.5%	6,193 78.1%	5,790 77.3%	5,727 76.9%	5,539 77.5%	6,960 78.6%	7,422 78.4%	7,162 78.7%	6,757 79.1%	6,696 79.0%
Armenian	14 0.2%	12 0.2%	10 0.1%	11 0.2%	12 0.2%	8 0.1%	9 0.1%	10 0.1%	20 0.2%	13 0.2%
Chinese	57 0.8%	75 0.9%	60 0.8%	50 0.7%	41 0.6%	47 0.5%	47 0.5%	50 0.5%	46 0.5%	37 0.4%
Farsi	51 0.7%	54 0.7%	38 0.5%	43 0.6%	33 0.5%	48 0.5%	55 0.6%	45 0.5%	37 0.4%	43 0.5%
Japanese	137 1.8%	141 1.8%	107 1.4%	86 1.2%	92 1.3%	85 1.0%	78 0.8%	84 0.9%	82 1.0%	85 1.0%
Korean	97 1.3%	99 1.2%	84 1.1%	82 1.1%	100 1.4%	112 1.3%	107 1.1%	102 1.1%	58 0.7%	77 0.9%
Russian	8 0.1%	7 0.1%	3 0.0%	4 0.1%	7 0.1%	10 0.1%	15 0.2%	9 0.1%	15 0.2%	13 0.2%
Spanish	969 12.9%	988 12.5%	1,063 14.2%	1,078 14.5%	998 14.0%	1,188 13.4%	1,331 14.1%	1,214 13.3%	1,134 13.3%	1,114 13.1%
Tagalog	183 2.4%	182 2.3%	160 2.1%	197 2.6%	155 2.2%	197 2.2%	195 2.1%	210 2.3%	213 2.5%	213 2.5%
Vietnamese	27 0.4%	20 0.2%	22 0.3%	15 0.2%	22 0.3%	30 0.3%	24 0.3%	31 0.3%	21 0.2%	23 0.3%
Other Languages	144 1.9%	161 2.0%	155 2.1%	156 2.1%	154 2.1%	169 1.9%	186 2.0%	184 2.0%	159 1.9%	159 1.9%
<b>Total</b>	<b>7,500</b> 100.0%	<b>7,931</b> 100.0%	<b>7,494</b> 100.0%	<b>7,450</b> 100.0%	<b>7,151</b> 100.0%	<b>8,855</b> 100.0%	<b>9,469</b> 100.0%	<b>9,102</b> 100.0%	<b>8,542</b> 100.0%	<b>8,473</b> 100.0%

NOTE: Credit students only. Figures are based on the percentages applied to First Census college enrollments.

Source: Los Angeles Community College District Office of Institutional Research and Information, *Information Digest* Report (<http://research.laccd.edu/research/>), Census Data Warehouse (CEN\_Rdb), and Student Information System (SIS).

# STUDENT DEMOGRAPHICS

## PRIOR EDUCATION



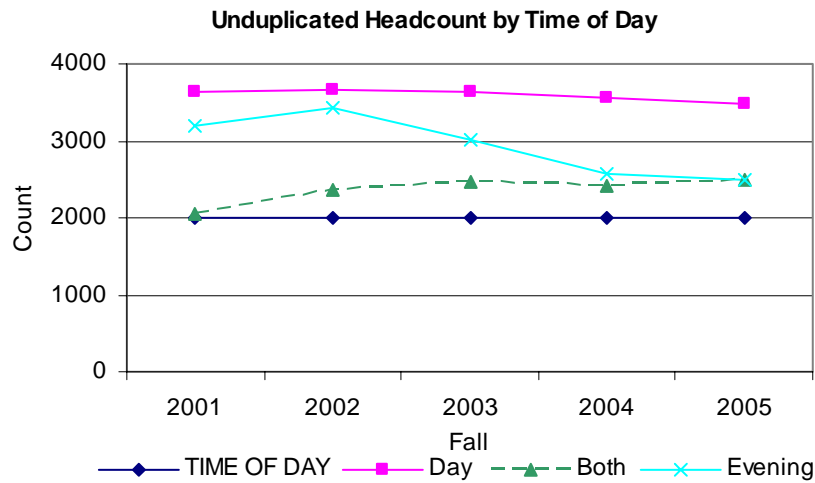
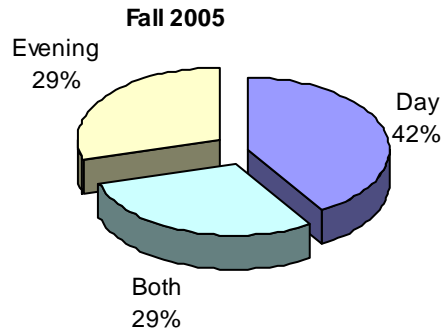
PRIOR EDUCATION	Fall									
	1996	1997	1998	1999	2000	2001	2002	2003	2004	2005
US HS Graduate	5,166 68.9%	5,454 68.8%	5,123 68.4%	5,068 67.9%	4,882 68.3%	5,623 63.5%	6,100 64.4%	6,112 67.2%	5,806 68.0%	5,624 66.4%
Foreign HS Graduate	493 6.6%	515 6.5%	435 5.8%	421 5.6%	387 5.4%	476 5.4%	459 4.8%	467 5.1%	399 4.7%	362 4.3%
H.S. Equiv, Prof Cert, etc.	421 5.6%	444 5.6%	412 5.5%	425 5.7%	428 6.0%	518 5.9%	577 6.1%	535 5.9%	565 6.6%	512 6.0%
Concurrently Enrolled HS Student	217 2.9%	241 3.0%	301 4.0%	284 3.8%	286 4.0%	723 8.2%	740 7.8%	454 5.0%	304 3.6%	570 6.7%
Not HS Graduate	483 6.4%	469 5.9%	464 6.2%	506 6.8%	460 6.4%	495 5.6%	589 6.2%	528 5.8%	491 5.7%	438 5.2%
AA Degree	328 4.4%	346 4.4%	306 4.1%	299 4.0%	303 4.2%	429 4.8%	405 4.3%	406 4.5%	398 4.7%	362 4.3%
BA Degree or Higher	392 5.2%	463 5.8%	452 6.0%	463 6.2%	405 5.7%	589 6.7%	600 6.3%	600 6.6%	581 6.8%	605 7.1%
<b>Total</b>	<b>7,500</b> 100.0%	<b>7,931</b> 100.0%	<b>7,494</b> 100.0%	<b>7,466</b> 100.0%	<b>7,151</b> 100.0%	<b>8,855</b> 100.0%	<b>9,470</b> 100.0%	<b>9,102</b> 100.0%	<b>8,542</b> 100.0%	<b>8,473</b> 100.0%

NOTE: Credit students only. Figures are based on the percentages applied to First Census college enrollments.

Source: Los Angeles Community College District Office of Institutional Research and Information, *Information Digest* Report (<http://research.laccd.edu/research/>), Census Data Warehouse (CEN\_Rdb), and Student Information System (SIS).

# STUDENT DEMOGRAPHICS

## TIME OF DAY



TIME OF DAY	Fall									
	1996	1997	1998	1999	2000	2001	2002	2003	2004	2005
Day	3,271 43.6%	3,271 41.2%	3,014 40.2%	3,222 43.2%	2,914 40.7%	3,625 40.9%	3,670 38.8%	3,637 40.0%	3,568 41.8%	3,478 41.0%
Both	1,580 21.1%	1,828 23.0%	1,772 23.6%	1,701 22.8%	1,654 23.1%	2,048 23.1%	2,370 25.0%	2,462 27.0%	2,410 28.2%	2,497 29.5%
Evening	2,649 35.3%	2,832 35.7%	2,708 36.1%	2,543 34.1%	2,583 36.1%	3,182 35.9%	3,429 36.2%	3,003 33.0%	2,564 30.0%	2,498 29.5%
<b>Total</b>	<b>7,500</b> 100.0%	<b>7,931</b> 100.0%	<b>7,494</b> 100.0%	<b>7,466</b> 100.0%	<b>7,151</b> 100.0%	<b>8,855</b> 100.0%	<b>9,469</b> 100.0%	<b>9,102</b> 100.0%	<b>8,542</b> 100.0%	<b>8,473</b> 100.0%

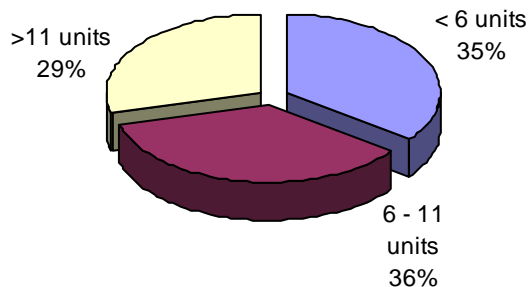
NOTE: Credit students only. Figures are based on the percentages applied to First Census college enrollments.

Source: Los Angeles Community College District Office of Institutional Research and Information, *Information Digest* Report (<http://research.laccd.edu/research/>), Census Data Warehouse (CEN\_Rdb), and Student Information System (SIS).

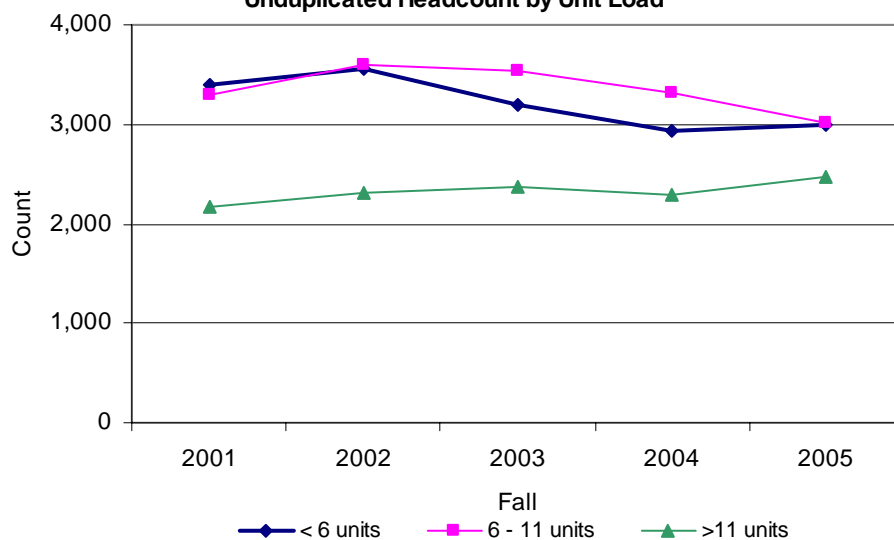
# STUDENT DEMOGRAPHICS

## UNIT LOAD

Fall 2005



Unduplicated Headcount by Unit Load



UNIT LOAD	Fall									
	1996	1997	1998	1999	2000	2001	2002	2003	2004	2005
< 6 units	2,561 34.1%	2,848 35.9%	2,653 35.4%	2,733 36.7%	2,624 36.7%	3,389 38.3%	3,551 37.5%	3,196 35.1%	2,940 34.4%	2,992 35.3%
6 - 11 units	2,795 37.3%	2,933 37.0%	2,856 38.1%	2,846 38.2%	2,853 39.9%	3,303 37.3%	3,608 38.1%	3,541 38.9%	3,315 38.8%	3,008 35.5%
>11 units	2,144 28.6%	2,150 27.1%	1,985 26.5%	1,871 25.1%	1,674 23.4%	2,163 24.4%	2,310 24.4%	2,365 26.0%	2,287 26.8%	2,473 29.2%
<b>Total</b>	<b>7,500</b> 100.0%	<b>7,931</b> 100.0%	<b>7,494</b> 100.0%	<b>7,450</b> 100.0%	<b>7,151</b> 100.0%	<b>8,855</b> 100.0%	<b>9,469</b> 100.0%	<b>9,102</b> 100.0%	<b>8,542</b> 100.0%	<b>8,473</b> 100.0%

NOTE: Credit students only. Figures are based on the percentages applied to First Census college enrollments.

Source: Los Angeles Community College District Office of Institutional Research and Information, *Information Digest* Report (<http://research.laccd.edu/research/>), Census Data Warehouse (CEN\_Rdb), and Student Information System (SIS).